

METHODIST GIRLS' SCHOOL
Founded in 1887



PRIMARY 4
SCIENCE
WEIGHTED ASSESSMENT 1

Total Time for Paper: 30 mins

INSTRUCTIONS TO CANDIDATES

Do not turn over this page until you are told to do so.

Follow all instructions carefully.

Answer all questions.

Name: _____ ()

Class: Primary 4. _____

Date : _____ February 2024

Parent's signature: _____

Section A	12
Section B	8
Total	20

This paper consists of 8 printed pages including this page.

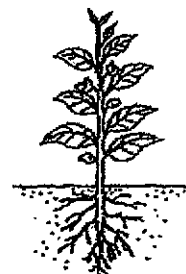
Section A

For each question from 1 to 6, four options are given. One of them is the correct answer. Make your choice (1, 2, 3 or 4) and write in the bracket provided. [12 marks]

1. The diagrams below show Plant A and Plant B.



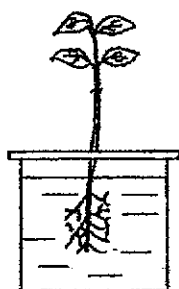
Plant A



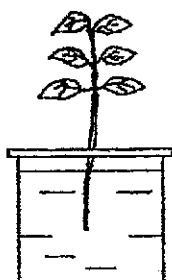
Plant B

Which one of the following is not true for both Plants A and B?

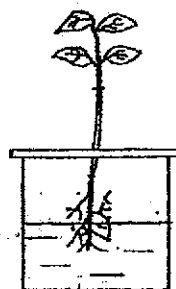
- (1) The roots absorb water.
 - (2) The roots take in mineral salts.
 - (3) The roots hold the plant firmly to the soil.
 - (4) The roots help the plants to survive and grow. ()
- 2 Sam conducted an experiment to find out if plants need leaves to survive.



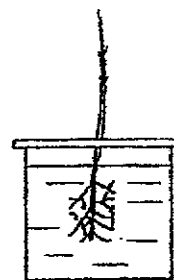
A



B



C



D

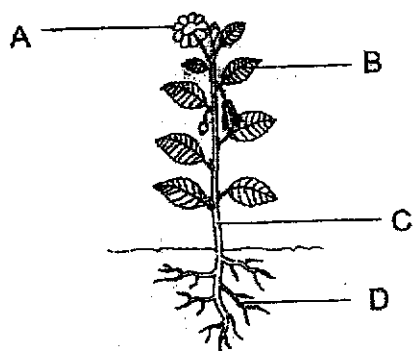
Which of the two set-ups above should he choose to conduct a fair test?

- (1) A and B only
- (2) A and D only
- (3) B and C only
- (4) C and D only ()

(Go on to the next page)

3

- 3 A flowering plant is shown below.

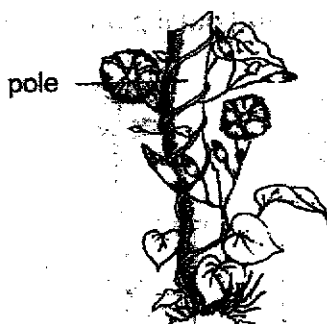


Which of the following correctly matches the plant part to its function?

	Plant parts	Functions
(1)	A	Traps sunlight to grow
(2)	B	Makes food for the plant
(3)	C	Takes in water and mineral salts
(4)	D	Supports branches and leaves

()

- 4 The picture below shows a plant X.



Which of the following statements is true about the stem of the plant X?

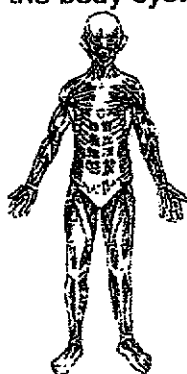
- A It is woody.
- B It is strong and holds the plant upright.
- C It climbs up a pole to get more sunlight.
- D It transports food and water and to the various parts of the plant.

- (1) A and B
- (2) A and C
- (3) B and D
- (4) C and D

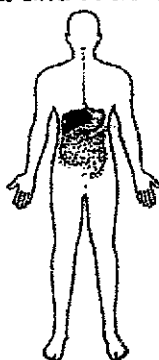
()

(Go on to the next page)

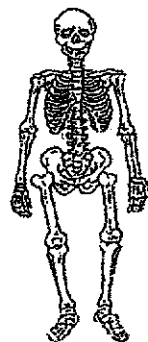
5 Study the body systems P, Q and R as shown below.



System P



System Q



System R

Which of the following statements are true?

- A Systems Q and R break food into simple substances.
- B Systems P and R work together to make the body move.
- C Without system R, the important parts of our body are not protected.
- D Without systems P and Q, the body cannot exchange gases with the surroundings.

- (1) A and B
- (2) B and C
- (3) C and D
- (4) A, B and C

()

6 May is playing floorball with her friend.



Which systems are involved to help her play floorball?

- A Skeletal system
- B Muscular system
- C Circulatory system
- D Respiratory system

- (1) A and B only
- (2) A and C only
- (3) B, C and D only
- (4) A, B, C and D

()

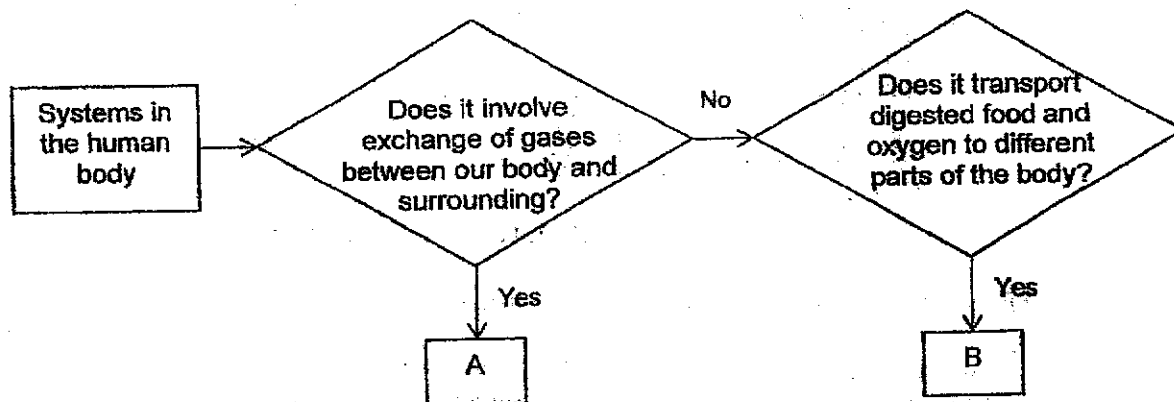
(Go on to the next page)

Section B

For questions 7, 8 and 9, write your answers in the spaces provided.

[8 marks]

- 7 The flowchart below shows the characteristics of some systems in the human body.



- (a) Identify the human systems above.

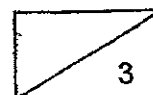
[2]

A: _____

B: _____

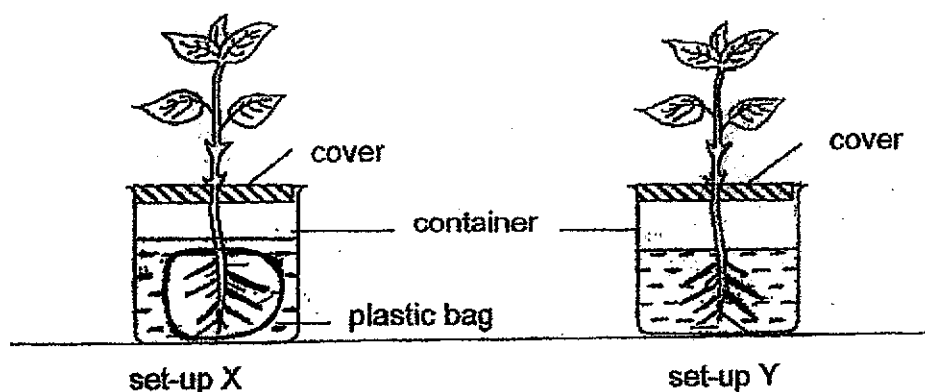
- (b) State another function of human system B.

[1]



(Go on to the next page)

- 8 Rahim carried out an experiment using the set-ups X and Y. The roots of the plant in set-up X was wrapped with a plastic bag. He sealed each container with a cover as shown below.



He recorded his results in the table below.

Day	amount of water (ml) left in	
	set-up X	set-up Y
1	200	200
2	200	190
3	200	175
4	200	150

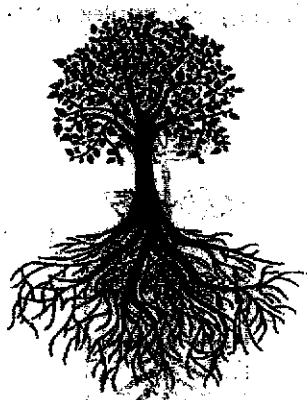
- (a) Using the information above, explain why the amount of water left in set-up Y decreased. [1]

- (b) Put a tick (✓) in one of the boxes below to identify the changed variable in this experiment. [1]

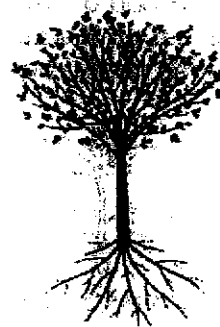
	Number of leaves
	Presence of roots in contact with water
	Amount of water in beaker before experiment
	Amount of water in beaker after the experiment

(Go on to the next page)

The diagrams below show two different trees, R and S growing near each other.

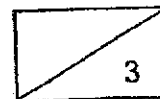


Tree R



Tree S

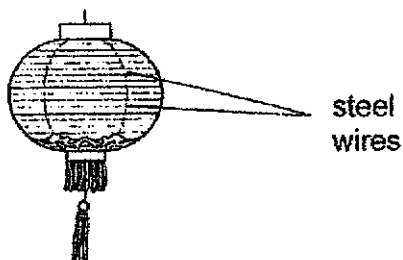
- (c) During a thunderstorm, one of the trees fell and the roots were pulled out from the ground. Which tree was more likely to have fallen? Explain your answer [1]



(Go on to the next page)

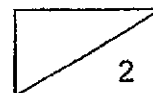
8

- 9 The diagram below shows a lantern. Mei Mei and her father used some steel wires to make the frame of the lantern. They then covered the frame with paper.



- (a) Name the human body system that serves the same function as the frame of the lantern. [1]

- (b) State two functions of this body system. [1]



End of paper

ANSWER KEY

YEAR : 2024
 LEVEL : PRIMARY 4
 SCHOOL : MGS
 SUBJECT : SCIENCE
 TERM : WA 1

SECTION A

Q1	3	Q2	2	Q3	2	Q4	4	Q5	2
Q6	4								

SECTION B

Q7	a) A: Respiratory system B: Circulatory system b) Human system B also transports waste materials away from all parts of the body.
Q8	a) The amount of the water decreased as the roots of the plant in set-up Y were not covered so the roots could take in the water. b) Presence of roots in contact with water. c) Tree S. S had less roots than tree R and roots anchor the tree to the ground so tree S fell.
Q9	a) Skeletal system b) The skeletal system supports the body and gives it shape.

END

